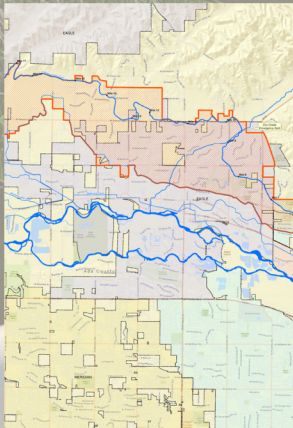


About Farmers Union Ditch Company

Farmer's Union Ditch Co., Ltd. is a nonprofit irrigation company. A board of directors guides the company; stocks (shares) are issued by the company to shareholders who then have the right to use water pursuant to the water rights held by the company.

The Farmer's Union canal is approximately 26 miles long and irrigates about 8,500 acres.



Eagle Sewer District in partnership with Farmers Union Ditch Company

is working to supplement
irrigation with drought-
resistant cleaned water in the
Eagle area.



44 N Palmetto Ave
Eagle ID 83616
(208) 939-0132

About Eagle Sewer District

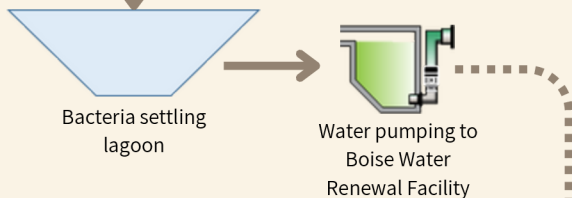
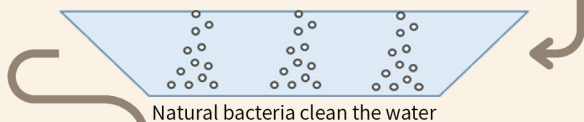
The Eagle Sewer District was created in 1963 on a vote by the public for the need of central sewer. We have a publicly appointed board of five members that set policies and procedures that the District staff implement. Eagle Sewer District gets its authority from Idaho State Code.

Eagle Sewer District is the only wastewater collection and treatment service in Eagle. Our first treatment plant was built in 1964 and has been expanded throughout the years to improve our treatment process and keep up with tremendous growth in the area. We have over 200 miles of sewer lines with over 15,000 connections and treat about 2.5 million gallons of used water per day.

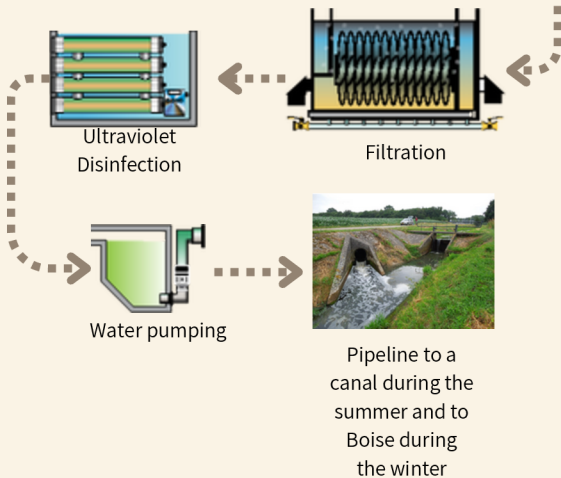
Eagle Sewer District is not a part of the City of Eagle, Veolia, Hardin or Avimor Wastewater Department. We do not manage any septic systems and we don't supply any drinking water.

EAGLE SEWER DISTRICT WATER CLEANING PROCESS

Used water from
homes and
businesses



Future cleaning processes to create
Class A reuse



FACTS.

What is Class A reuse?

Class A reuse water is wastewater that has been treated to the highest standard, allowing it to be reused for applications with high exposure to humans, like irrigation for landscaping, food crops, or even toilet flushing, as it undergoes intensive disinfection and tertiary treatment processes to ensure safety and quality, meeting strict standards for pathogen removal; essentially, it's the most highly treated recycled water suitable for a wide range of non-potable uses.

PARTNERSHIP

BENEFITS

Recycled water is drought-resistant helping to provide additional irrigation water

What does 2.5 million gallons a day (3.9 cubic feet per second) of recycled water look like?

-One football field 6-feet deep every day.
(in 2024 and growing to 9-feet deep as more homes and businesses are built by 2040)



3 FT Diameter pipe constantly running at half full.

Patrons who are already paying to clean the water, get the benefit of reusing it